



Rahim Trading Corporation



Rahim Trading Corporation

RTC IS ONE STOP SHOP SOLUTION FOR ALL YOUR LAB & TESTING REQUIREMENTS

- ◆ Civil ◆ Surveying ◆ Soil Testing ◆ Medical ◆ Laboratory ◆ Training
- ◆ Chemicals & Glasswares ◆ Testing facility ◆ Complete lab setup facility

About Us

Rahim Trading Corporation was established in **2013** and is functioning as a successful manufacturer, supplier, distributor, importer and wholesaler of Laboratory Equipment and many more. Our assortment of products comprises of Civil, Surveying, Soil Testing, Medical, Laboratory, Training, Chemicals & Glasswares, Testing facility, Complete lab setup facility clean room equipment, NDT, analytical, biotech instrument, process instrument, air monitoring equipment, measuring meters etc. The offered products are repeatedly ordered by our prestigious clients owing to their seamless finish, effective performance, durability, energy efficiency, resistance towards corrosion, easy operation and low maintenance. They find usage in medical research laboratory, metallurgical department, hospitals, food processing industry, pharmaceutical plants and plastic manufacturing plants.

RTC specializes in tailor-made equipment to suit their customer's specific requirements.

Our policy

Our policy is to go an extra mile so that we not only satisfy the need of our customers but exceed their expectations. Our products always have something innovative in their design or manufacturing process to improve the performance and reliability as well as to reduce the overall cost. We believe that previous technologies will not remain relevant for today's requirement & today's solutions will not be adequate for tomorrow. In this quest, we are always on the lookout for new innovations & cutting edge technologies that we can offer for the benefit of our customers.

Our Team

We are among the recognized names in the industry owing to the support of our professionals. Our team members are dexterous, talented, educationally qualified, experienced and committed towards the exponential growth of the firm. They are abreast with the latest techniques and trends for improving our product range and offering impeccable solutions to our clients. Our team members attend various seminars and workshops for keeping themselves abreast with changing developments. We have quality controllers, warehouse personnel, engineers, technicians and sales

TEST SIEVE

Stainless Steel Sieve

Brass Sieve

TS-200/300

Made from stainless steel, Brass

Diameter: 200mm, 300mm

Other size: 100mm, 450mm etc.



FY22L480W40KSD

Sieve Aperture Size Table

Aperture		Mesh/In	Aperture		Mesh
125	mm	5 in.	2.36	mm	No.8
106	mm	4.24 in.	2.00	mm	No.10
100	mm	4 in.	1.7	mm	No.12
90	mm	3-1/2 in.	1.4	mm	No.14
75	mm	3 in.	1.18	mm	No.16
63	mm	2-1/2 in.	1.00	mm	No.18
53	mm	2-12 in.	850	um	No.20
50	mm	2 in.	710	um	No.25
45	mm	1-3/4 in.	600	um	No.30
37.5	mm	1-1/2 in.	500	um	No.35
31.5	mm	1-1/4 in.	425	um	No.40
26.5	mm	1.06 in.	355	um	No.45
25.5	mm	1.00 in.	300	um	No.50
22.4	mm	7/8 in.	250	um	No.60
19.0	mm	3/4 in.	212	um	No.70
16.0	mm	5/8 in.	180	um	No.80
13.2	mm	0.530 in.	150	um	No.100
12.5	mm	1/2 in.	125	um	No.120
11.2	mm	7/16 in.	106	um	No.140
9.5	mm	3/8 in.	90	um	No.170
8.0	mm	5/16 in.	75	um	No.200
6.7	mm	0.265 in.	63	um	No.230
6.3	mm	1/4 in.	53	um	No.270
5.6	mm	No.3-1/2	45	um	No.325
4.75	mm	No.4	38	um	No.400
4.00	mm	No.5	32	um	No.450
3.35	mm	No.6	25	um	No.500
2.80	mm	No.7	20	um	No.635

ULTRASONIC CLEANER

Stainless Steel Ultrasonic Cleaner
FY22L480W40KSD

- Product size: 325*180*280mm
- In-tank size: 300*150*150mm
- Product material: 304 stainless steel
- Product color: silver
- Power: 180W
- Capacity: 22litter
- Made in : China

SIEVE SHAKER

Standard Mechanical Sieve Shaker SS-300

For sieve diameter: 200mm, 300mm

Vibration: 221times/ min

Vibration journey: 25mm

Peak attack times:147times/min

Power: 0.37Kw

High Frequency Sieve Shaker SS-301

EN 932-5

Vibration frequency: 42HZ

Vibration mode: Upper and down ways



SS-300



SS-301

REFRIGERATOR

— Blood Bank & Medical —

Model	Picture	Blood bank	Medical	Capacity	Product Dimension	Package Dimension	Gross Weight	Description
		Temp. Range	Temp. Range					
XY-50		4 ±1°C	2-8°C	50L	470*450*545	550*580*670	23	Solid Door Carton package Italy CAREL temp. control
XY-90		4 ±1°C	2-8°C	90L	490*490*1240	580*580*1350	47	Glass Door Carton package Italy CAREL temp. control
XY-138		4 ±1°C	2-8°C	138L	500*500*1260	590*590*1360	58	
XY-198		4 ±1°C	2-8°C	198L	520*480*1630	600*600*1700	68	
XY-218		4 ±1°C	2-8°C	218L	325*485*1640	605*600*1700	73	Glass Door Carton package Italy CAREL temp. control
XY-260		4 ±1°C	2-8°C	260L	525*485*1770	610*600*1830	76	
XY-280		4 ±1°C	2-8°C	280L	575*525*1880	670*640*1855	80	
XY-300		4 ±1°C	2-8°C	300L	580*530*1800	675*645*1860	82	
XY-340		4 ±1°C	2-8°C	340L	615*525*1950	700*635*2030	87	
XY-360		4 ±1°C	2-8°C	360L	620*530*1960	700*640*2040	89	
XY-390			4 ±1°C	2-8°C	290L	550*500*1750	650*645*1840	
XY-398	4 ±1°C		2-8°C	398L	620*530*1960	700*640*2040	89	
XY-490		4 ±1°C	2-8°C	490L	700*680*1860	785*850*1990	110	Plywood package Secop Compressor Italy CAREL temp. control
XY-520		4 ±1°C	2-8°C	520L	750*680*1860	790*850*1955	118	
XY-428		4 ±1°C	2-8°C	428L	525*485*1770	610*600*2030	115	2 Doors Plywood package Secop Compressor Italy CAREL temp. control
XY-450		4 ±1°C	2-8°C	450L	890*550*1860	990*640*2040	120	
XY-680		4 ±1°C	2-8°C	680L	1200*670*1880	1350*780*1980	130	2 Doors Plywood package Secop Compressor Italy CAREL temp. control
XY-700		4 ±1°C	2-8°C	700L	1200*670*1880	1350*785*1980	130	
XY-770		4 ±1°C	2-8°C	770L	1200*680*1880	1350*790*1985	145	
XY-800		4 ±1°C	2-8°C	800L	1200*685*1890	1350*795*1990	150	
XY-998		4 ±1°C	2-8°C	998L	1200*720*1860	1350*850*1980	160	2 Doors Plywood package Secop Compressor Italy CAREL temp. control
XY-1028		4 ±1°C	2-8°C	1028L	1200*730*1860	1355*850*1985	165	
XY-1200		4 ±1°C	2-8°C	1200L	1200*750*1860	1355*850*1990	170	
XY-1380		4 ±1°C	2-8°C	1380L	1800*700*1860	1710*845*1975	175	3 Doors Plywood package Secop Compressor Italy CAREL temp. control
XY-1550		4 ±1°C	2-8°C	1550L	1800*720*1860	1920*850*1980	245	
XY-1600		4 ±1°C	2-8°C	1600L	1800*750*1860	1920*850*1985	260	

Digital Display

— Compression Testing Machine —

The testing machine is mainly used to measure the compressive strength of brick, stone, concrete and other building materials. It is necessary test and detection equipment for construction, building materials, highway bridges and other engineering units. This machine is electric hydraulic manual loading, sensor force measurement. It has the functions of loading speed display, peak value maintenance, data storage, printing, query and compressive strength conversion. www.RTCDHAKA.com

Hydraulic system:

The hydraulic oil in the oil tank enter the oil circuit through the motor drives the high-pressure pump, flows through the return oil valve, and into the oil cylinder. The force measuring instrument collects and analyzes the data through the sensor, showing the constant force value. The operator through the delivery valve to adjust the flow and control the test force rate.

System of force measurement

/ Manually adjust the return valve, the operation is simple and flexible.

- * Has the maximum load peak maintain function.
- * Has loading rate dynamic display function.
- * Has a random test report with test date, number, damage load compression strength etc.

Safety protection

When the test force exceeds 3% of the maximum test force, overload Protection will be implemented and the oil pump motor will stop.



Max load 2000kN	Max load 2000kN
Host structure	Four - column structure
Measuring range	10% to 90%
Relative error of test force indicating Value	Within $\pm 1\%$
Distance between columns	260mm
Distance between up and down pressure plates	320mm
Platen size	Upper: ϕ 250mm Lower : 220*220mm
Piston stroke	30mm
Piston action direction control	one-way cylinder
Power supply	380V 50Hz
Motor power	0.75 kW
Package dimensions	About 1100 * 560 * 1380mm
Weight About	600kg

Factory standard configuration list

Item	Quantity	Notes
Testing machine	1 set	With motor, oil pump, return valve
Force measuring instrument	1 set	On the mainframe, and including a micro printer
Pressure sensor	1 piece	
Up and down pressure plates	1 piece	

Working Environment Conditions of Testing Machine

Ambient temperature range: 10°C–35°C, if have special requirements, the test temperature should be 23°C \pm 5°C.

- 1.Placed on a solid foundation. 2.In a clean environment with no vibration. 3.No strong electromagnetic interference surrounding.
- 4.Power supply voltage fluctuation range should be not more than plus or minus 10%

NDT Equipment & Construction material equipment



- Universal Testing Machine
- Compression Testing Machine
- Bar Bending and Cutting Machine
- Rebound Hammer
- Rebar Locator
- Ultrasonic Pulse Velocity Tester
- Ultrasonic Flaw Detector
- RCPT (Rapid Chloride Permeability Test Apparatus)
- Ultrasonic Thickness Gauge
- Crack Monitors
- Coating Thickness Gauge
- Rockwell Hardness Tester
- Concrete Measure Meter
- Distance Meter

Soil Testing Equipments



- Air Compressors & Vacuum Pump
- Automatic Soil Compaction Machine
- California Bearing Ratio
- Digital Triaxial Shear Test Apparatus
- Direct Shear Apparatus
- Field Density, Specific Gravity
- Liquid Limit
- Plate Bearing Test
- Shrinkage Limit Test
- Soil Permeability
- Dynamic Cone Penetration Test
- Static Cone Penetration Test
- Soil Ager

Aggregate Testing Instruments



- Thickness Gauge
- Length Gauge
- Flakiness Gauge
- Density Basket
- Specific Gravity and Water Absorption of Aggregates
- Riffle Sample Divider
- Hydraulic Jacks
- Aggregate Crushing Value Apparatus
- Aggregate Impact Tester with Blow Counter
- Los Angeles Abrasion Testing Machine
- Dorry Abrasion Testing Machine
- Compaction Factor Apparatus

Concrete Testing Instruments



- Gauging trowel
- Compaction Factor Apparatus
- Kelley Ball Penetration Apparatus
- Cone Penetration Apparatus
- VEE BEE Consistometer
- Curing Tank
- Direct Shear
- Air Entrainment Meter
- Concrete Air Meter
- Crack Monitors
- Rapid Freeze-thaw Cabinet
- Cylindrical End Grinder

Laboratory Civil Chemical



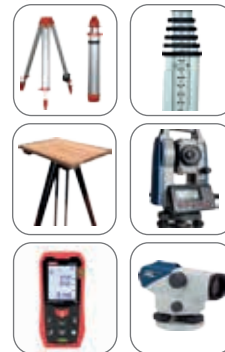
- Stander sand
- GRADED SAND ASTM C778
- STANDARD SAND, EN-196-1 SAND
- ACC Refractoriness Fire Constable
- TRL Cast FH 70-G
- Monocon cast 1850
- RO Antiscalant Chemical
- High Constable Refractory
- broiler raising 001X7
- Constable Refractory cement
- Acid resistant Bricks

Bitumen / asphalt Testing Equipments



- Abel Flash Point Apparatus
- Asphalt & Concrete Floor Saw
- Automatic Bituminous Compactor
- Benkelman Beam
- Bitumen Penetration Kit
- Cleveland Flash (Open) & Fire Point Apparatus
- Cloud and Pour Point Apparatus
- Ductility Testing Machine
- Extension Tester
- Marshall Apparatus
- Pensky Martens Flash Point Tester - Gas Heated
- Ring and Ball Apparatus

Survey Testing Equipment



- Sight Vane Brass
- Ammonia Printing Machine
- Magnet Compass in Wooden Box
- Spirit Level
- Automatic Level
- Survey Chain
- Survey Compass
- Plane Table with Metal Head
- Survey Umbrella
- Cup Counter Anemometer
- Transit Theodolite
- Engineer's Multi Purpose
- Tilting Level

Cement Testing Instruments



- VICAT Needle Apparatus
- LE Chatelier Mould
- LE Chatelier Water Bath
- LE Chatelier Flask
- Vibrating Machine
- Slump Test Apparatus
- Concrete Mixer & Vibrator
- Flexure Testing Machine
- Mortar Mixer
- Cube Mould
- Cylindrical Mould
- Beam Mould

Mortuary Fridge



Model	Specifications	Inner Temperature	Deepest Temperature	Net/Gross Weight
STG8	8 BODIES	1 ^o 5 °C	-18 °C/30°C OPTIONAL	880/1020KG
Power	Material	Temp. Controller	Tray Dimension (D*W)	Cabinet Dimension (D*W*H)
2800W	201 STAINLESS STEEL	GAREL (ITALY)	1950*610 mm	1990*650*450 mm
Cooling System	Voltage	Compressor Brand	Products Dimension (D*W*H)	Package Dimension (D*W*H)
8 UNITS	220V/50Hz	DONPER (CHINA)	2480*1550*2150 mm	2640*1670*2250 mm

Feature of Corpse Cold Storage Freezer all type Stainless Steel Mortuary Refrigerator:

The mortuary refrigerators also called corpse cold storage freezing box cabinet is a series of product for hospitals are used for the storage of human corpses awaiting identification or removal for autopsy or disposal by burial or other methods. Our Mortuary freezers equipped with quality refrigeration system, chamber, control system and safety features. Our corpses freezers are fully made of high-quality stainless steel with high corrosion resistance and beautiful and luxury appearance.

The system is fully assembled, simply plug into the outlet .

The system has a special high-resolution temperature calibrating function and high accuracy computer controlled temperature system made in Italy.

Quality binding which can maintain the temperature constancy in the cold box.

Temperature Control System of Corpse Cold Storage Freezer all Bodies Stainless Steel Mortuary Refrigerator:

The refrigeration system of each chamber is individually controlled.

Italy CAREL High-accuracy computer-controlled temperature controller Temperature constancy in the box at 1-5°C.

The calibrating increment is 0.1°C.

Temperature display precision is 0.1°C, the adjusting increment is 0.1°C.

Temperature is adjustable from -16°C~5°C / -30°C is optional .



Compressor

Imported and branded compressor, for maintenance free cooling performance



Temperature Controller

Individual temperature controller for each chamber, high resolution LED display with various safety features.



Tray

Made of thick gauge of stainless steel sheet runs of heavy duty rollers, smooth operation.



Door Handle

Heavy duty door handles with lock & key individual door handles for each chamber.

Microscope & Telescope



- Binocular/ Trinocular Microscope
- Zoom Stereo Microscope
- Biological microscope
- Metallurgical Microscope
- Coaxial Research Microscope
- Fluorescence Microscope
- Tool Maker Microscope
- Projection Microscope
- Tissue Culture Microscope
- Digital LCD microscope
- Polarizing / Petrological Microscope
- Telescope

Balance



- Spring Balance
- Animal Weighing Balance
- Digital Analytical Balance
- Chemical balance
- Micro & Semi micro balance
- Economic compact balance
- General purpose table top balance
- High precision balance
- Precision Gold Balance
- Heavy duty Platform scale
- Stainless Steel Platform Balance
- Baby Analytical Scale
- Halogen Moisture Balance
- Water Proof scale
- Crane Scale

Water Testing equipment



- PH Meter
- TDS Meter
- Conductivity Meter
- Multiparameter water quality meter
- Water Testing Kit
- ION specific Meter
- COD Digestion Apparatus
- Dissolved Oxygen Meter
- BOD & COD Analyzer
- Turbidity Meter
- Photo colorimeter
- Online ph/conductivity/Tds meter

Medical equipment



- Medical Blood Agar
- Centrifuge Tube 15ml and 50ml
- Yellow Trips
- Blow trips
- Glass Slide
- Nursing Human Model
- Human Skeleton
- Pulse Ox meter
- PTFE Type Syringe Filters
- Nylon Syringe Filters Welded Type
- Moving commode wheel chair
- Surgical Hospital Work Shoes
- Micro Pipette
- Medical Emergency Trolley
- Medical blood sample

Textiles Laboratory



- Textile Marker Pens
- Merck pH paper
- Digital timer
- GSM cutter
- Detergent Powder
- Multifibre DW SDC 10 Mtr
- IBE Thermo Paper Strip
- Thermal Paper
- Oasis Water Purification Tablet
- PALL Membrane Filter
- Peroxide Test Strip
- Iron Test Kit
- PH buffer solution
- Chloride Test Kit

Measuring Meter



- Oxygen Meter
- Sound Level Meter
- Chlorine Meter
- Vibration Meter
- Digital Hygrometer
- Digital Inclinometer
- Gloss Meter
- Digital Portable Tachometer
- Digital Viscosimeter
- Leaf area Meter
- Color Gauge Meter
- Gauss Meter

General Laboratory Equipment



- Humidifier
- De- Humidifier
- Centrifuges
- Heating Mantle
- Hot Plate
- Soxhlet Extraction Unit
- Vacuum Pump
- Willy Mill
- Slide warming table
- Automatic pipette washer
- Terg-o -tometer
- Ball mill

Water Distillation Unit & Rotary Evaporator



- Water Distillation Still(Automatic wall mounting)
- Water Distillation Still(Table pattern Barnstead type)
- Water Still (Heavy duty)
- Glass distillation apparatus
- Quartz distillation apparatus
- Horizontal Distillation Apparatus
- KJELDAHL DISTILLATION UNIT
- KJELDAHL DIGESTION UNIT
- Micro Kjeldahl Distillation Unit
- Rotary Vacuum Evaporator
- VACUUM ROTARY EVAPORATOR (BUCHI TYPE)
- 2/4 Bed Deionizer

Laboratory Fume Hood

T1 Fume Hood

All steel fume hood is the most basic and common of all fume hoods. Steel fume hood is generally applicable for common laboratory applications such as boiling, evaporation, drying, and other applications that emit noxious fumes and vapors.



Technical parameter:

Sn.	Description	Specification		
1	External dimension (mm)	1200*850*2350	1500*850*2350	1800*850*2350
2	Internal dimension (mm)	960*660*1180	1260*660*1180	1560*660*1180
3	Opening height of the window (mm)	760		
4	Air quantity (m ³ /h)	1300	1700	2100
5	Exhaust diameter (mm)	φ250		
6	Face velocity (m/s)	0.3~0.5		
7	Noise (dB)	Less than 65		
8	Power input voltage (V)	Two phase 220V 50Hz		
9	Current and power of power socket	10A 2200W		
10	Net weight (kg)	182	218	249

Sterilizer/Autoclave



- Autoclave/ Sterilizer
- Portable Autoclave
- Vertical Manual Autoclave
- Vertical Fully Automatic Autoclave
- High Pressure Vertical Triple Walled
- Double Door Sterilizer
- Surgical Autoclave
- Horizontal High Pressure Steam Sterilizer
- Cement Autoclave
- Plant Tissue Culture
- Tissue culture rack
- ETO Sterilizer
- Front loading flash autoclave

Protection Gloves



- Safety Gloves
- Nylon Knitted Gloves
- Latex Rubber Gloves
- Bio Colour Neoprene Gloves
- Nitrile Blue Powder free Disposable Gloves
- Kevlar Knitted Sleeve with Thumb Slot
- Heat Resistant Leather Gloves
- Cryogenic Gloves
- Black Neoprene Gloves
- PVC Supported Gloves
- Electrosoft Gloves
- Full Aramid Gloves

Furnace



- Muffle Furnace
- Microprocessor based Furnace
- Top loading Furnace
- Bottom loading Furnace
- High Temperature muffle Furnace - 1700°C
- Tube Furnace
- Programmable Tube Furnace
- High Temperature Tube Furnace
- Split type furnace- Vertical
- Split type furnace- Horizontal
- PLC Furnace
- Vacuum Furnace

Shakers & Stirrers



- Magnetic Stirrer
- Multi position Magnetic Stirrer
- Laboratory Stirrer (High Speed Stirrer)
- Gyrotory Sieve Shaker
- Sieve Shaker Table Top Model
- Rotap Sieve Shaker
- Rotary Flask Shaker
- Vortex Mixer (Test Tube Shaker)
- VDRL Shaker
- Metabolic Shaker
- Wrist Action Shaking Machine
- Mechanical Shaker (RECIPROCATING KAHN'S TYPE)

Laboratory Thermometer



- Laboratory Thermometer
- Temperature and Humidity Digital, PH -1000
- Zeal Wet And Dry Bulb Hygrometer
- 110°C Zeal glass Thermometer
- 360°C Zeal Glass Thermometer
- Normal 110°C glass Thermometer
- Normal 150°C glass Thermometer
- Normal 200°C glass Thermometer
- Normal 250°C glass Thermometer
- Normal 360°C glass Thermometer
- TP-300 thermometer
- -50°C to 360°C IRR Thermometer
- -50°C to 550°C IRR Thermometer

Cooling Equipment



- Pharmacy / medical refrigerator
- Plasma freezer
- Freeze Drier (Lyophilizer)
- Blood Bank Refrigerator
- Ice Flaking Machine
- -20 degree Deep Freezer
- -40 degree Deep Freezer
- -86 degree Deep Freezer
- Horizontal Deep Freezer
- Chest freezer
- Mortuary Chamber
- Walk in cold room
- Ice Maker Machine

Incubators and Ovens



- Memmert Incubator
- BOD Incubator
- CO2 Incubator
- Bacteriological Incubator
- Egg & Poultry Incubator
- Orbital Shaking Incubator
- Incubator & Oven Combined
- Double walled Hot Air Oven
- Triple walled High Temperature Hot Air Oven
- Industrial Drying Oven
- Tray Drier
- Vacuum Oven
- Hatchery Setup
- Mini Egg Incubator

Water Bath and Chillers



- Double Walled Rectangular Water Bath
- Serological Water Bath
- Refrigerated Water Bath
- Circulating Water Bath
- Ultrasonic Cleaning Bath
- Tissue Floatation Bath
- Chiller Circulation
- Industrial chiller
- Viscosity Bath
- Oil Bath
- Dry bath
- High Precision Water Bath

Auto Level Machine



	B20	B30A	B40A
Telescope			
Length	215mm (8.46in.)	214mm (8.42in.)	
Magnification	32x	28x	24x
Objective Aperture	42mm (1.65 in.)	36mm (1.42 in.)	32mm (1.26 in.)
Resolving Power	3"	3.5"	4"
Field of View (at 100m/328ft.)	1°20' (2.3m / 7.5ft.)	1°25' (2.5m / 8.2ft.)	
Minimum Focus	0.2m (7.9 in.) from end of telescope 0.3m (1ft.) from instrument center		
Image	Erect		
Stadia Constant	0		
Stadia Ratio	100		
Focusing Knob	2-speed	1-speed	
Sighting Aid	Peep Sight		Gun Sight
Accuracy (1km double run leveling)			
Without Micrometer	0.7mm (0.03 in.)	1.5mm (0.06 in.)	2.0mm (0.08 in.)
With Micrometer	0.5mm (0.02 in.)	n/a	
Compensator			
Type	Pendulum compensator with magnetic damping system		
Setting Accuracy	0.3"	0.5"	
Working Range	±15'		
Circular Level			
Sensitivity	10' / 2mm		
Horizontal Circle			
Diameter	103mm (4.1in.)	99mm (3.9in.)	
Minimum Division	1°/1gon		
General			
Water Resistance	IPx6 (IEC 60529:2001)		
Operating Temperature	-20 to +50°C (-4 to +122°F)		
Size			
Width	130mm (5.12in.)	122mm (4.84in.)	
Length	215mm (8.46in.)	214mm (8.4in.)	
Height	140mm (5.51 in.)		
Weight	1.85kg (4.1lbs.)	1.5kg (3.3lbs.)	



— Ultrasonic Cleaner —



3L180W40KSD

Power: 180W
Heating power: 150W
Frequency: 40KHz
Transducer: 3
Inner slot size: 240*135*100mm
Overall dimensions: 265*165*220mm
Package size: 340*245*310mm
Net weight : 3.4kg



6L180W40KSD

Power: 180W
Heating power: 300W
Frequency: 40KHz
Transducer: 3
Inner slot size: 300*150*150mm
Overall dimensions: 325*180*280mm
Package size: 410*255*355mm
Net weight : 4.4kg



30L900W40KSD

Power: 900W
Heating power: 600W
Frequency: 40KHz
Transducer: 15
Inner slot size: 500*300*200mm
Overall dimensions: 530*325*325mm
Package size: 635*405*390mm
Net weight : 14kg



10L360W40KSD

Power: 360W
Heating power: 300W
Frequency: 40KHz
Transducer: 6
Inner slot size: 300*240*150mm
Overall dimensions: 325*265*280mm
Package size: 435*360*350mm
Net weight : 8kg



15L540W40KSD

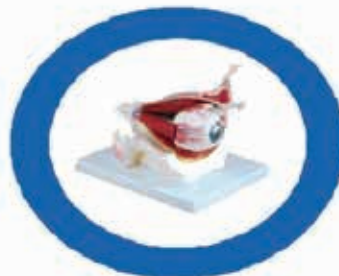
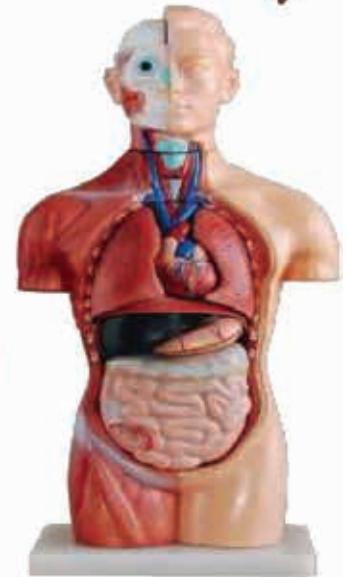
Power: 540W
Heating power: 450W
Frequency: 40KHz
Transducer: 9
Inner slot size: 330*300*150mm
Overall dimensions: 360*325*285mm
Package size: 460*410*340mm
Net weight :9.2kg



22L900W40KSD

Power: 900W
Heating power: 600W
Frequency: 40KHz
Transducer: 15
Inner slot size: 500*300*150mm
Overall dimensions: 530*325*285mm
Package size: 635*405*340mm
Net weight : 13.2kg

ANATOMY MODEL



Human Skeleton
CPR Model
Nursing Model



Laboratory, Medical, Civil, Surveying & soil testing Equipment

RTC | **Rahim Trading Corporation**
Importer & Supplier

27, Hatkhola Road, Tikatoly, Dhaka-1203, Call: +88-01831-016720, 01710-640355
Email: rtcdhaka2013@gmail.com, www.rtc dhaka.com, FB / Youtube : RTCBD